



# CHICKEN

## SUPPLY CHAIN HOTSPOTS



START



### HOTSPOTS

- 1 Environmental Impacts**  
Clearing land for agriculture causes deforestation in some areas. Improper management of soil, fertilizer, pesticides, water, and energy to grow feed causes pollution and affects workers, communities, climate, and natural resources.
- 2 Air Quality**  
Chicken manure releases ammonia that causes air quality issues for workers and communities.
- 3 Energy Consumption**  
Chicken housing operations use electricity and fuel which lead to climate change and pollution.
- 4 Labor Rights**  
Workers, especially women and migrants, may face labor issues including unfair pay.
- 5 Nutrition Management**  
Chicken manure releases greenhouse gases and can cause water pollution and climate change.
- 6 Water Use**  
Water use in feed cultivation and used in animal farm operations can deplete water resources.
- 7 Worker Health and Safety**  
Workers may be exposed to dust, chemicals, or other hazards on the farm.
- 8 Animal Welfare**  
Chickens may face health issues related to lack of adequate housing, proper nutrition, or proper transportation.
- 9 Antibiotic Use**  
Chickens may need antibiotics to treat disease but overuse can cause antibiotic resistance in humans and affect the environment.

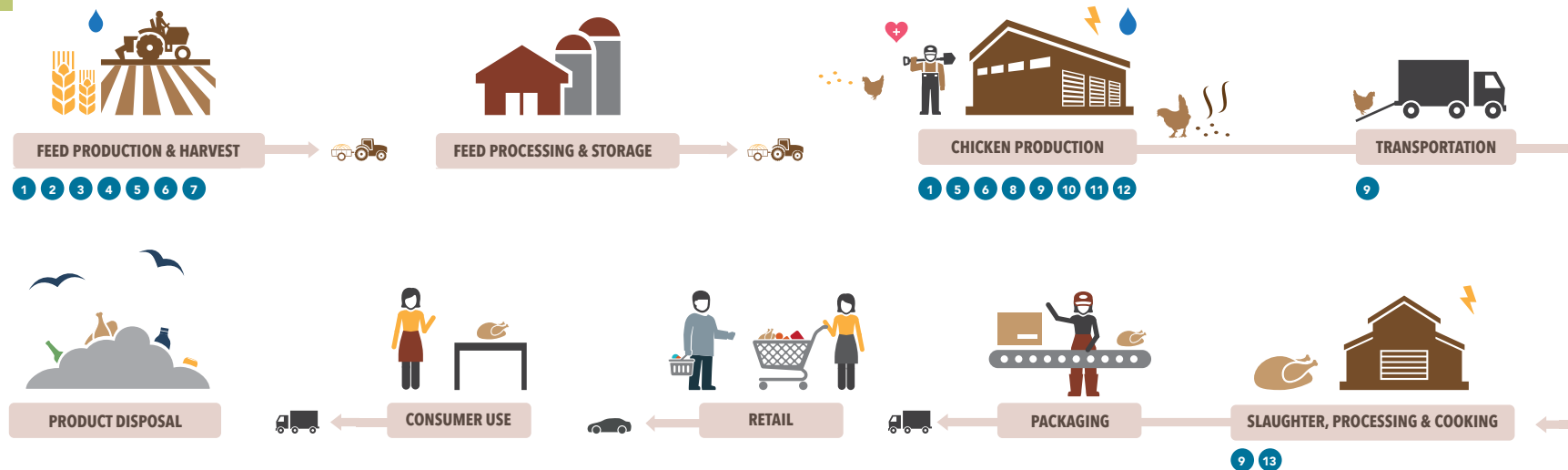


# CHICKEN

## SUPPLY CHAIN KPIs



START



### KEY PERFORMANCE INDICATORS

<p><b>1</b> <b>Carcass Utilization</b></p> <p>CORRESPONDS TO HOTSPOT(S):</p> <p>1 5</p>	<p><b>2</b> <b>Deforestation and Land Conversion – Feed sourcing</b></p> <p>CORRESPONDS TO HOTSPOT(S):</p> <p>1</p>	<p><b>3</b> <b>Feed Conversion Ratio</b></p> <p>CORRESPONDS TO HOTSPOT(S):</p> <p>1</p>	<p><b>4</b> <b>Fertilizer Application – Feed Cultivation</b></p> <p>CORRESPONDS TO HOTSPOT(S):</p> <p>1</p>	<p><b>5</b> <b>Greenhouse Gas Emissions – Animal Farm Operations</b></p> <p>CORRESPONDS TO HOTSPOT(S):</p> <p>1 5 7</p>
<p><b>6</b> <b>Nutrient Management – Animal Farm Operations</b></p> <p>CORRESPONDS TO HOTSPOT(S):</p> <p>1 7</p>	<p><b>7</b> <b>Water Use – Animal Farm Operations</b></p> <p>CORRESPONDS TO HOTSPOT(S):</p> <p>1</p>	<p><b>8</b> <b>Air Quality – Animal Farm Operations</b></p> <p>CORRESPONDS TO HOTSPOT(S):</p> <p>2 7</p>	<p><b>9</b> <b>Animal Welfare Certifications and Audits</b></p> <p>CORRESPONDS TO HOTSPOT(S):</p> <p>3</p>	<p><b>10</b> <b>Antibiotic Use – Animal Farm Operations</b></p> <p>CORRESPONDS TO HOTSPOT(S):</p> <p>4</p>
<p><b>11</b> <b>Labor Rights – Animal Farm Operations</b></p> <p>CORRESPONDS TO HOTSPOT(S):</p> <p>6</p>	<p><b>12</b> <b>Worker Health and Safety – Animal Farm Operations</b></p> <p>CORRESPONDS TO HOTSPOT(S):</p> <p>8</p>	<p><b>13</b> <b>Greenhouse Gas Emissions – Processing</b></p> <p>CORRESPONDS TO HOTSPOT(S):</p> <p>9</p>		